

Lanracorp inc.

QUALITY
AND SAFETY.
ALWAYS

Quarterly Newsletter

LETTER FROM THE PRESIDENT

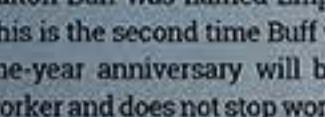
Hope everyone is doing well! As I'm writing this letter we are having 70 degree days in the middle of April, grass is starting to grow, and by all means it looks like an early start to spring.

We are so blessed to have added new customers in 2016 and to be working on such exciting projects this year. We love the work we do! It's exciting, challenging at times, and rewarding. ROW clearing is something that allows for a very clear before and after photo. You can clearly see what has been accomplished and take great pride in the difference you've made in terms of quality and a job done safely. As I look back through before and after photos from our crew foreman so far this year we have made some big changes on our customers job sites! Thank you to the crews for a job well done!

Safety is always priority #1 at Lanracorp. Our crews have performed a lot of work so far this year and have done so without a safety incident. Hats off the crews for being each other's keeper, making it a culture of safety, and not letting go of the goal of zero incidents. We are starting to see better participation with our BBS program. Being proactive is always greatly preferred over being reactive. This BBS program along with near miss reporting allows for our team to trend data from the field and then put into place precautions to help prevent an incident before it happens.

When this newsletter goes out we will likely be beginning weed spraying activities as well. Our mix this year performed exceptionally well in 2015. In 2015 we had the lowest amount of re-spray needs ever. We also had the fewest runoff concerns. These two facts tell how great these new herbicides are in comparison to older mixes, even though they are significantly more expensive they save money and time in the long run. Last year you read where we did herbicide trials and I'm proud to say our 2016 mix is still weed free today from our application last spring.

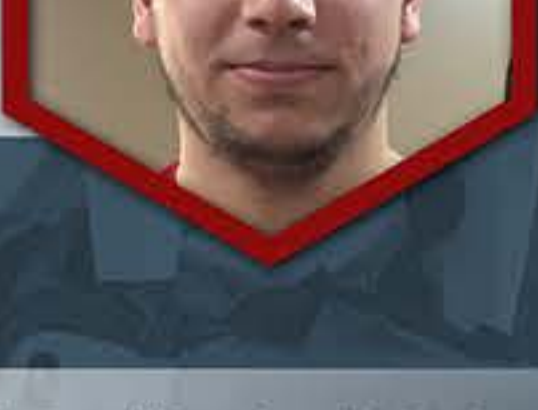
Hats off to the crews for a great start to 2016. Let's continue to push our goal of zero incidents! Be each other's keeper, it's a culture of safety not a book of rules, and remember safety affects everyone here and everyone at home.

Sincerely,

Brent Oberlink

EMPLOYEES OF THE QUARTER

Dalton Buff was named Employee of the Quarter for first quarter 2016. This is the second time Buff was name Employee of the Quarter and his one-year anniversary will be June 2016. Buff is an extremely hard worker and does not stop working. He is always busy and takes initiative to move from one task to the next. Buff takes pride in his work and has proved him-self to be an excellent leader to become a foreman of his own crew this summer.

Thank you Dalton for all your hard work and congratulations!



Dalton Buff

Brad's nickname is the "Tree Ninja". He is one of the hardest working crew-members when it come to tree felling, because he just doesn't stop! Our crews drop hundreds of trees in a day and he would drop every single one of them if he had it his way. Brad is any clearing crew team's most valuable player because of his experience with a chainsaw and was also nominated by his crew for Employee of the Quarter.



Brad Maass



QUALITY
AND SAFETY.
ALWAYS

2016
1ST
QUARTER
STATISTICS:

AT-RISK
BEHAVIORS - 34

SAFE
BEHAVIORS - 1485

Our top two "at-risk" behaviors for the first quarter were Environmental and Body Positioning. Most of our environmental behaviors reported included ice and terrain hazards during the winter. Our focus of discussion was proper clothing choices and footwear, during the cold, wet and icy months. As well as performing careful pre-job walk through assessments, scanning the ground for hidden hazards or soft ground from the daily fluctuating temperatures and making smart decisions when operating equipment. Now as spring is fast approaching, environmental hazards will still be a top topic for safety meetings. There has been reported sightings of poison ivy, wasps, and ticks already this year with the warm temperatures.

The 2nd at risk behavior was body positioning, with most of the recorded behaviors regarding chainsaw use. Chainsaw operations occur everyday on the ROW, some crews may only drop 1 - 2 trees in a day and others may drop 75 or more! Regardless of how many trees that a crew will drop, each tree can be dangerous in its own way. Some of our crew-members were able to attend an amazing safety summit that had a solid focus on chain saw and ROW activities. We have also held on-site safety meetings regarding chainsaw safety and complacency, and we have received great ideas from these discussions in the field that we are working on to improve communication and skills. Including the use of whistles for our tree-dropping crews. Please see our section regarding chainsaw safety for more tips.



MULTI-FACETED APPROACH TO ROW VEGETATION MANAGEMENT

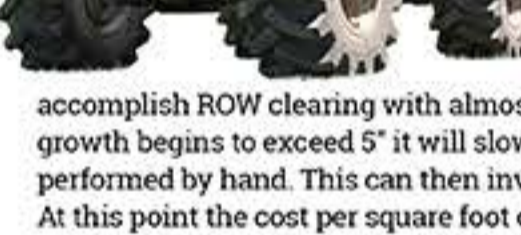


What constitutes a quality Vegetation Management program?

The goal is a ROW that has a clear view to the sky, little to no woody growth, and is accessible in the event of an emergency. However, you are tasked with keeping cost down and making the most of every dollar while still meeting the above criteria. What's the best way to do this you might ask. We call this our SmartROW™ system. A comprehensive approach that includes a ROW Assessment, a blend of mechanical ROW clearing and herbicide treatments, and followed up by a long term plan that seeks to address problem areas and identify areas of cost savings.

We use ROW clearing to remove all woody growth but in that process it is important to also use basal herbicides to help slow any regrowth. During our ROW clearing process we also seek to identify areas where a foliar blend may be advantageous. Often times areas in most need of basal and foliar treatments are the areas where hand clearing is most problematic. This is what makes this system unique and allows us to drive down cost long term as well as helping our ROW clearing crews to lower workplace hazards. After all, in the tree care industry most incidents are line of fire. If our crews can perform ROW clearing in an area and then treat this area to help slow re-growth it eventually decreases the amount of heavy clearing needing done. This allows for a concentration on true ROW maintenance opportunities such as mowing, which can be performed at a much lower cost per mile then full clearing or tree removal.

While this is often a multi-year approach, the end game is a clear ROW for aerial inspections as well as meeting regulatory compliance.



WHY IS A MAINTENANCE PROGRAM IMPORTANT?

Everyone in the industry knows why ROW clearing is important. In the electric utilities industry it's very obvious to keep trees branches out of the lines in order to prevent outages. In the pipeline industry it's for several reasons to protect the pipeline from root systems, to allow a clear line of site for pilots to see the ROW, and to avoid foot patrols. These are just a few reasons not to mention regulatory issues.

Saying all of that, what is the importance of routine maintenance? The answer is simple: cost. We like to drive down costs per square foot. One of the biggest single items that drive that cost up is the size of trees on the ROW. For example, if we are dealing with 15' trees we can accomplish ROW clearing with almost strictly mechanical methods which is much quicker. Once the vegetative growth begins to exceed 5' it will slow the mechanical process and also potentially involve more work to be performed by hand. This can then involve chippers, dump trucks and specialized forestry/logging machines. At this point the cost per square foot or mile begin to climb drastically, not to mention the increased safety risks involved with performing tree felling versus simply mulching small trees with a forestry mulcher.

A ROW plan that allows routine scheduled work to be performed on specific intervals is key to a long term successful program that is cost efficient, safely performed, and allows for flat line budgeting. Not to mention the various other benefits of meeting regulatory compliance, having good ground to sky view for the pilot, or keeping landowners happy. After all, it's much easier to convince a landowner that the ROW brush needs mowed versus convincing them to remove the 80 year old tree in their front yard.

Ask us about our SmartROW system that tackles ROW clearing from not only a planned approach but includes various methods of vegetation management. Vegetation management is about so much more than cutting brush or trees. Use the full arsenal available and take control of your ROWs for years to come.

CHAINSAW SAFETY:

The use of chainsaws and dropping trees are one of the most dangerous activities we encounter. Our training focuses heavily on tree felling safety as well as safe operations of chainsaws. It's important to continue using these same safety tips even when cutting limbs or trees at home.

A FEW SAFETY PRECAUTIONS:

- BEFORE STARTING A SAW:**
- Check all bolts for tightness and chain tension
 - Make sure the oil reservoir is full and the chain sharp
 - NEVER drop start a saw, place it firmly on the ground to start
 - Make sure the chain brake is engaged prior to starting the saw
 - When fueling your saw make sure to use a funnel, never attempt to fill a hot saw
 - Wear Chaps, safety glasses, and a hardhat with ear muffs and a face shield
- GENERAL SAFETY AND WHILE USING:**
- Clear away all limbs and small debris from your work area
 - Look for metal that may be embedded in the tree from nails or fencing
 - ALWAYS engage your chain brake when the saw is not in use
 - ALWAYS use two hands on the saw
 - Wear required gloves
 - No loose fitting clothing
 - Scan the tree and your surroundings for dead branches, hidden energy in the trunk, and nearby utilities
 - Never saw with the tip of the chainsaw, AVOID kickback



WEED SPRAYING 2016:

We've officially began weed spraying activities and by all means it appears to be an early spring. All of our customers should have received our SDS sheets for this year's herbicide mix. This mix is a very similar chemistry to our 2015 mix with a few slight changes. As many of you know we perform trials both in the field and near our office, the mix for 2016 has performed exceptionally well. From a less than 7% respray need to a much more stable mixture that doesn't move off the targeted location this mix is well worth the extra money we spend on it.

DID YOU KNOW?

IN 2015 LANRACORP CLEARED OVER 1,000 MILES OF PIPELINE ROW.
IN THAT SAME YEAR WE ALSO APPLIED HERBICIDES ON OVER 1,000 ACRES.



"Since we just passed the Easter season, it seems appropriate to re-visit the central tenet of the Christian faith, which is this: Jesus died, and then rose from the dead three days later. Now, of course, people throughout history have disagreed whether this really happened or not, and there has been much debate throughout the centuries. So I want to focus on just five reasons why we can have confidence in the historical accuracy of the Gospel-writers' accounts of the events surrounding Easter. Here are three reasons you can trust Jesus really did rise from the dead.

- 1) The Empty Tomb

Jesus was publicly executed by crucifixion, buried in the tomb of Joseph of Arimathea (a member of the same Council that condemned Jesus), and sealed off and guarded by the Roman garrison located in Jerusalem. These are all verifiable, historical facts that no one contests (at least not in any way that is taken seriously by historians). Where the rub comes is with the empty tomb. The political and religious leaders of the day were avidly against Jesus' movement, so the easiest way they could have squashed this entire "resurrection rumor" was to produce the body.

But they couldn't, because it was no where to be found. The tomb was empty, and the body was gone. In fact, the Gospel-writers even mention a rumor that was started by the Jewish religious leaders that his disciples had come and stolen the body in the night, but this was highly unlikely, since they would have had to kill the guards and unseal the tomb, both of which were difficult. The fact that the Gospel writers mention it in their accounts show they are not afraid of such ridiculous accusations.
- 2) The Post-mortem Appearances

Even if people don't believe that Jesus rose from the dead, it is indisputable that there were a large amount of people who claimed to see Jesus in various places and times AFTER his death. In fact, Paul writes in 1 Corinthians 15:3-8 that there were over 500 people who saw Jesus after he rose from the dead. That number of people is far to large for a conspiracy, and Paul even states 20 years after the fact, "most of whom are still alive." Basically, he's saying, "If you don't believe me, most of them are still alive. Go ask them yourself." This is called eye-witness accounts. It's difficult to come up with several hundred eye-witnesses that still agree over 20 years later.
- 3) The Boldness of the Disciples

In most religious texts in the world, the leaders of the religion are presented as strong and confident, smart and bold. But if you read the descriptions of the disciples in the Gospel accounts, it is quite the opposite. They are cowardly, divisive, arrogant, and power-hungry. They constantly misunderstood Jesus' teachings, and the moment their safety and lives were in danger, they abandoned their teacher...until he rose from the dead.

A common statement given as an argument AGAINST the resurrection is that the disciples made up the whole story to start a new religion and gain all sorts of power and prestige for themselves. But if you look at the history of the early church, they did not possess any kind of wealth, power, or influence until into the 4th century, once the Roman Empire adopted Christianity as the state religion. For the entirety of the disciples' lives (every single one of them was martyred, except John, who was exiled and died of old age) and the following three centuries, Christians were persecuted and suffered at the hands of others because they held to this idea that Jesus rose from the dead.

Why would anyone make up an idea that would only lead to their imprisonment, beating, and subsequent executions? There was literally NOTHING for them to gain by lying about this idea that Jesus rose from the dead, and everything to lose. Many Christians (Saul of Tarsus, who would later become the apostle Paul, for example), actually LOST what would be considered very lucrative, comfortable lives for accepting this central idea that Jesus rose from the dead. It simply doesn't follow logic to assume that the idea was made up for personal gain.

The Verdict:
Now, I know there are other reasons that people object to the resurrection of Jesus, but because of these reasons alone, the burden of proof lies with the objectors. There is plenty of verifiable and historical evidence to demonstrate that Jesus actually died and actually rose from the grave. The Gospel accounts alone provide us with plenty of evidence to point us in the direction that SOMETHING HAPPENED on that day 2000 years ago. We may not all agree on exactly what it was, but there is no denying something miraculous HAPPENED."

Donations were made to St. Jude's and Plant a Tree for trees removed in clearing activities.



HAVE YOU LIKED US ON FACEBOOK YET?