

# A BETTER WAY TO CLEAR ROW

## SMART ROW

1

**ROW ASSESSMENT  
WALKING AND  
DRONE**

**CLICK FOR  
MORE**

2

**BUILD ROW  
CLEARING PLAN**

3

**PUT INTO GIS**

4

**INCORPORATE  
IVM & BEST  
PRACTICES**

5

**ENSURE  
DOT/PHMSA  
REQUIREMENTS  
ARE MET**

- ENSURE COMPLIANCE WITH PHMSA AND DOT
- CLEAR ROW WITH INDUSTRY BEST PRACTICES AND API RECOMMENDATIONS
- LOWER LONG TERM ROW COSTS
- LONG TERM PLAN AND BUDGET SIMPLICITY



# A BETTER WAY TO CLEAR ROW

# ROW ASSESSMENTS

## ***ROW Assessments Utilizing Line Walks and Drone Technology***

### **Why It Matters?**

- ROW Clearing can't be a shotgun style approach, it must be specific, otherwise you are wasting money.

### **Our Approach:**

- Build a Detailed Plan via Foot and Drone Patrols
- Incorporate IVM and other industry best practices
- Build a totally customized plan for each section of ROW

### **Benefits:**

- Clear ROW Plan that lowers long term costs while improving compliance
- Assessments allow for exact data that is measurable and able to be tracked



**SCHEDULE ROW  
ASSESSMENT**



A BETTER WAY TO CLEAR ROW

# BUILD ROW CLEARING PLAN

## *Custom ROW Clearing Plans with Integrated Vegetation Management*

### **What is IVM?**

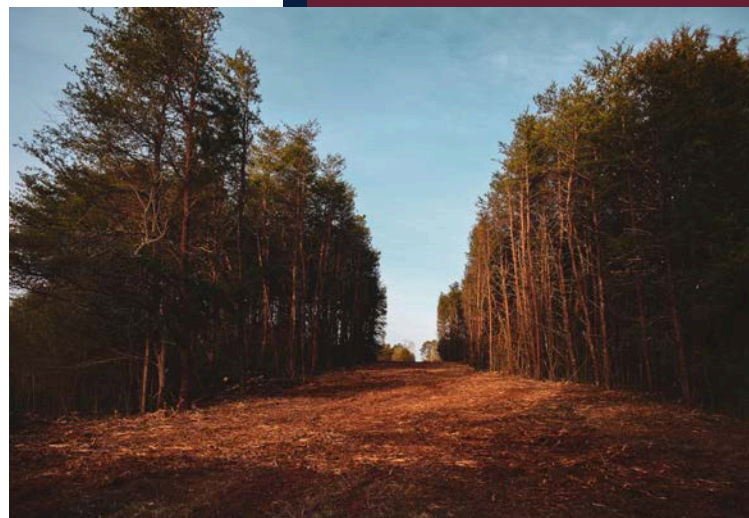
- Integrated Vegetation Management balances mechanical, chemical, and ecological methods.

### **Planning Components:**

- Use of selective herbicides
- Strategic replanting or native plant support
- Mechanical clearing where appropriate

### **Why It Works:**

- Safer, more sustainable, and often cheaper long-term.



**SEE A SAMPLE  
PLAN**



A BETTER WAY TO CLEAR ROW

# GIS WITH LANRACORP

## ***Powering ROW Management with GIS Mapping***

### **The Value of GIS:**

- Real-time location data
- Easier tracking of maintenance and issues
- Shows all encroachments, issues, skips, shallow pipe, and before/after photos of work
- Shows work completed to date

### **How We Use It:**

- Map all details on the ROW, including all hazards
- Identify risk zones, build a ROW maintenance schedule

### **Results:**

- Centralized Data, Fewer Surprises
- All data for the project in one spot
- Detailed ROW Historical Data



**EXPLORE GIS IN  
ACTION**



A BETTER WAY TO CLEAR ROW

# INCORPORATE VALUE ADDS

## ***Beyond Clearing: Value-Added Services for Your ROW***

### **What's Included:**

- Depth of cover surveys
- Shallow pipe repair
- Land agent support
- Erosion control
- Project management
- Line marker installation
- Habitat and Environmental Planning and Mitigation

### **Why It Matters:**

- Holistic ROW maintenance = fewer regulatory issues and lower long-term costs

### **Results:**

- Centralized data, fewer surprises
- Get more services done while crews are on site and while ground is clear



**GET A FULL-  
SERVICE QUOTE**



A BETTER WAY TO CLEAR ROW

# ENSURE DOT/PHMSA COMPLIANCE

## ***Stay Compliant with DOT/PHMSA ROW Requirements***

### **The Regulatory Landscape:**

- Overview of relevant federal pipeline safety regulations.

### **How We Ensure Compliance:**

- Documentation
- Program alignment
- Program Build Out and Execution
- Full GIS Reporting including before/after photos, work completed and where at

### **Peace of Mind:**

- Mitigate risk, avoid fines, and protect pipeline integrity

**REQUEST A  
COMPLIANCE  
AUDIT**