

SMART-ROW



LONG-TERM RIGHT-OF-WAY
EFFECTIVENESS & COST REDUCTION

Lanracorp inc.

SERVING CLIENTS NATIONWIDE

Enbridge Meeting: Thursday, March 19th, 2026

A BRIEF OVERVIEW

QUALITY AND SAFETY. ALWAYS.

Right-of-way vegetation management is one of the most critical components of pipeline integrity, damage prevention, regulatory compliance, safety, and public perception. Traditional clearing programs often lead to repeated regrowth cycles and recurring costs. SmartROW™ shifts vegetation management from reactive clearing to a strategic multi year program combining mechanical clearing, Integrated Vegetation Management (IVM), GIS planning, and specialized equipment.

COMMON CHALLENGES IN TRADITIONAL ROW PROGRAMS



RAPID REGROWTH

Mechanical clearing leaves active root systems that quickly regenerate woody vegetation.



LABOR INTENSIVE WORK

Increased labor requirements raise safety exposure and operational costs.



LIMITED DOCUMENTATION

Without consistent assessments it is difficult to track vegetation pressure or optimize budgets.



CHALLENGING TERRAIN

Slopes and mountainous terrain require specialized equipment and present increased safety risks.



A QUICK LOOK AT OUR NUMBERS

3 YEAR
AVERAGE EMR

0.51

AVERAGE MILES DRIVEN

600,000+

NO AT FAULT ACCIDENTS

3 YEAR
AVERAGE EMR

0.90

AVERAGE #
OF EMPLOYEES

70

AVERAGE # OF HOURS
WORKED

140,000

(Annually)

HOW LANRACORP'S **SMART-ROW**

ADDRESSES THESE CHALLENGES

The Big Question: What is SmartROW™?

SmartROW™ integrates mechanical clearing with targeted herbicide applications, vegetation stabilization strategies, GIS documentation, and specialized equipment.

The goal is to transition right-of-way management from reactive clearing to a predictable long-term vegetation strategy that reduces costs while improving safety and compliance

HERBICIDE APPLICATION



HIGH-VOLUME (HV) APPLICATION

50–200+ GPA; used to thoroughly wet dense vegetation using truck, skid, handgun, or backpack sprayers.



LOW-VOLUME (LV) APPLICATION

5–40 GPA; relies on targeted droplet placement with more concentrated herbicide mixtures using backpack or UTV mounted sprayers. commonly used for selective brush control and routine ROW maintenance.



ULTRA-LOW VOLUME (ULV) APPLICATION

<5 GPA (often ounces per acre); uses highly concentrated herbicides applied via aerial systems, drones, or ULV atomizers—ideal for large, inaccessible, or mountainous ROW areas with very high productivity.

VEGETATION STABILIZATION & GROUND COVER MANAGEMENT



VEGETATION STABILIZATION & SUSTAINABLE ROW ECOSYSTEMS

Encouraging vegetation that stabilizes soil and competes with woody species creates a more sustainable ecosystem and helps maintain clearer ROW corridors between management cycles.



POLLINATOR HABITAT & ESG BENEFITS

Strategic seeding and ground cover support ESG goals by creating habitats for Monarch butterflies and other pollinators, while also providing opportunities for public outreach, signage, and educational content.



INDUSTRY-RECOMMENDED INTEGRATED VEGETATION MANAGEMENT

Integrated Vegetation Management (IVM) with habitat considerations is recommended by the API and conservation organizations as a best practice for long-term ROW management.

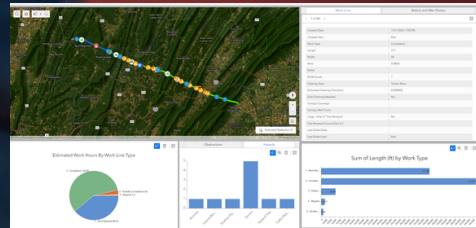
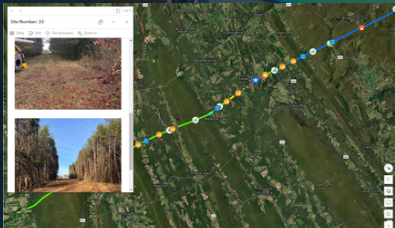
SPECIALIZED EQUIPMENT FOR CHALLENGING TERRAIN

FOR STEEP OR DIFFICULT TERRAIN, LANRACORP DEPLOYS SPECIALIZED EQUIPMENT SUCH AS REMOTE-CONTROLLED SLOPE MOWERS AND LOW-CENTER-OF-GRAVITY MACHINES DESIGNED FOR SAFE SLOPE OPERATION.



GIS DOCUMENTATION & ROW ASSESSMENTS

FOR STEEP OR DIFFICULT TERRAIN, LANRACORP DEPLOYS SPECIALIZED EQUIPMENT SUCH AS REMOTE-CONTROLLED SLOPE MOWERS AND LOW-CENTER-OF-GRAVITY MACHINES DESIGNED FOR SAFE SLOPE OPERATION.



WHITE-GLOVE ROW SUPPORT

LANRACORP SUPPORTS ROW OPERATORS BEYOND FIELD OPERATIONS THROUGH

- detailed assessments
- vegetation management planning
- marker visibility enhancement
- documentation of treatments
- total transparency



MULTI-YEAR **SMART-ROW**

STRATEGY

YEAR 1

Assessment & Initial Mowings/Treatments

- A full ROW assessment identifies vegetation pressure points, steep terrain challenges, and areas where targeted treatments can provide the greatest benefit.
- Initial clearing and herbicide applications are implemented to begin reducing woody vegetation pressure.

YEAR 2

Regrowth Reduction & Vegetation Stabilization

- Full implementation of IVM to targeted areas identified and planned out during the previous year's mowing cycles.
- Areas that were identified during the previous mowing cycle where planting native grasses or ground cover to choke out woody growth or for slope stabilization are planted.
- 10-foot path mowing takes place where necessary.

YEAR 3

Optimized Maintenance Cycle

- By the third season, many high-regrowth zones are significantly improved. Vegetation maintenance becomes more predictable, slopes stabilize, and overall clearing requirements begin to decrease.
- Crews continue to provide 10 foot and full width mowing while documenting areas needing further IVM treatments to prevent regrowth on areas of steep slope, heavy hand work, or especially heavy regrowth.
- By year 3, benefits begin to emerge showing less woody re-emergence.

LONG-TERM BENEFITS FOR PIPELINE OPERATORS

- ✓ **REDUCED VEGETATION REGROWTH WITH LOWER FUTURE COSTS**
- ✓ **MORE PREDICTABLE VEGETATION MANAGEMENT BUDGETS**
- ✓ **IMPROVED ENVIRONMENTAL IMPACT WITH A FOCUS ON HABITAT CONSERVATION AND ENHANCEMENTS LEADING BETTER ESG PERFORMANCE**
- ✓ **SAFER RIGHTS-OF-WAY**
- ✓ **SUPPORTING DOCUMENTATION FOR AUDITS AND REGULATORY COMPLIANCE**

Lanracorp inc.

**QUALITY
AND SAFETY.
ALWAYS.**



Lanracorp.com | 619 South 3rd Street, Brownstown, IL 62418 | Info@Lanracorp.com